

NOTE: Additional thoroughfares may be required in accordance with the adopted City of Weatherford Thoroughfare Plan, specifically page 19 (Functional Street Classification Characteristics), the City of Weatherford General Plan, chapter 6, or the current Engineering Design and Construction Manual. As such, the absence of a thoroughfare as shown on this map does not relieve the property owner or developer from providing a thoroughfare as required.

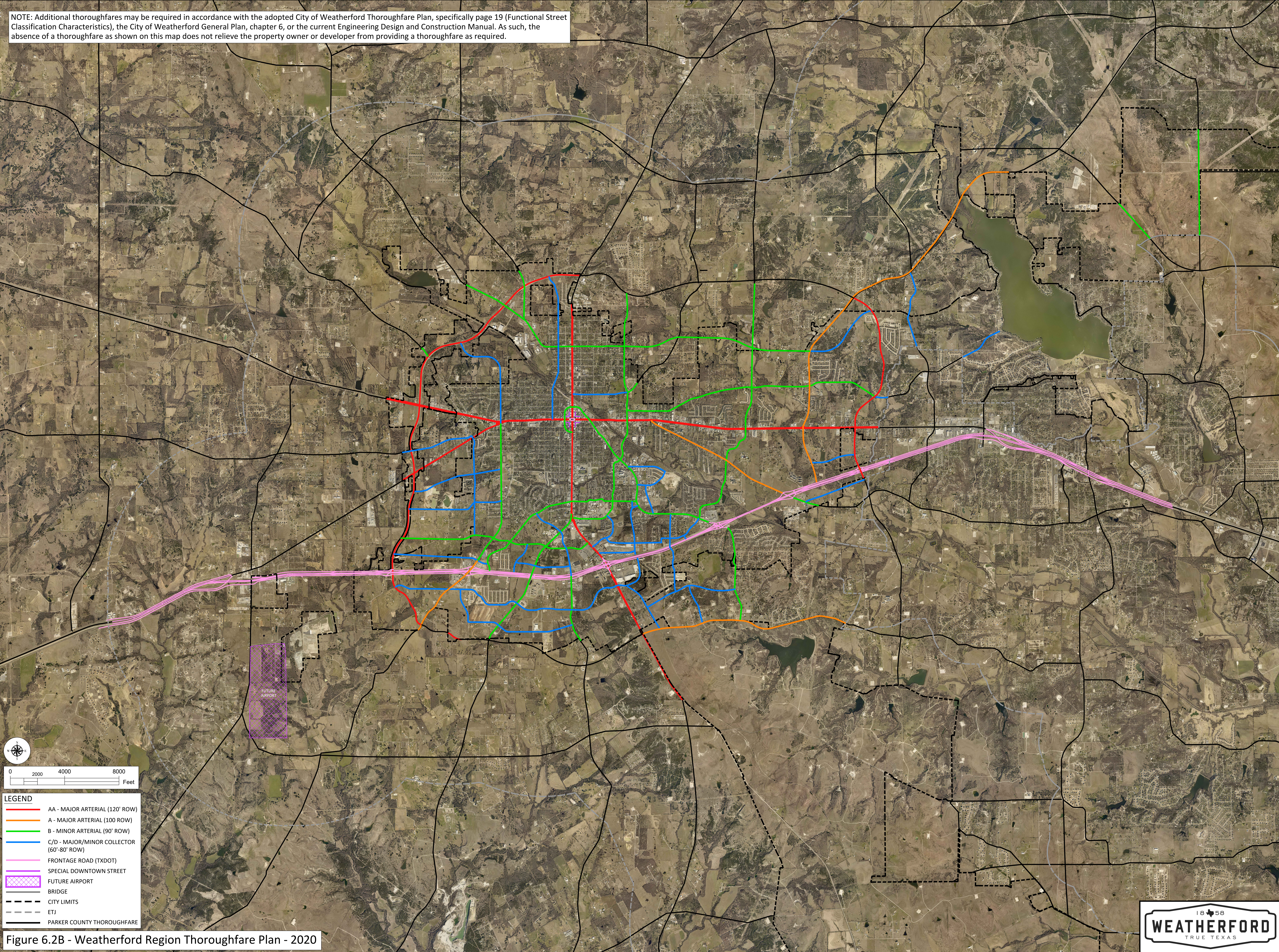


Figure 6.2B - Weatherford Region Thoroughfare Plan - 2020